

User Manual

Moonboon Cradle

Important: Read the user manual carefully
and keep it for future use.



moonboon®
kids & baby studio

Contents

2	Congratulations on Your New Moonboon Product
3	Important Information
3	Instructions Video
4	What is Included
5	Mounting Options
6	Assembly, Spring
7	Assembly, Cradle
9	Height
9	Placement of Your Child
10	Questions and Answers
11	Cleaning Instructions
12	Safety Checklist

Congratulations on Your New Moonboon Product

Moonboon's Cradle has been designed for Moonboon's Spring and Motor system. Use the Cradle with or without the Motor.

The standard Cradle comes with a Spring for the Baby Hammock and the Twin Baby Hammock. Use the Spring when the baby weighs 3-12kg.

To ensure safe usage of the Cradle, the Spring needs to be attached, and the Cradle needs to be installed with one of the following: Moonboon's Tripod Stand 2.0, Mounting Kit, or Door Frame Clamp.

Follow the User Manual carefully to ensure the Cradle is assembled and installed correctly.

Do not use systems or other brand products that have not been designed to work with the Cradle.

Important Information

WARNING

Do not use this product without reading the User Manual beforehand.

WARNING

You must stop using this product once the child can sit by itself, lie on its knees, or can crawl out of the Cradle.

WARNING

Using third-party products not designed to work with this product may cause choking hazards.

WARNING

Do not use this product near any other products that may obstruct its use.

WARNING

Do not use this product around products that can cause choking hazards or strangulation, such as wires, strings, or curtain cords.

WARNING

Do not use more than one mattress in this product.



Instructions Video

Moonboon has developed a series of videos to show you easily and quickly how to assemble and mount your Moonboon product.

The instructional videos are a supplement to the user manual. It is crucial that you read this user manual.

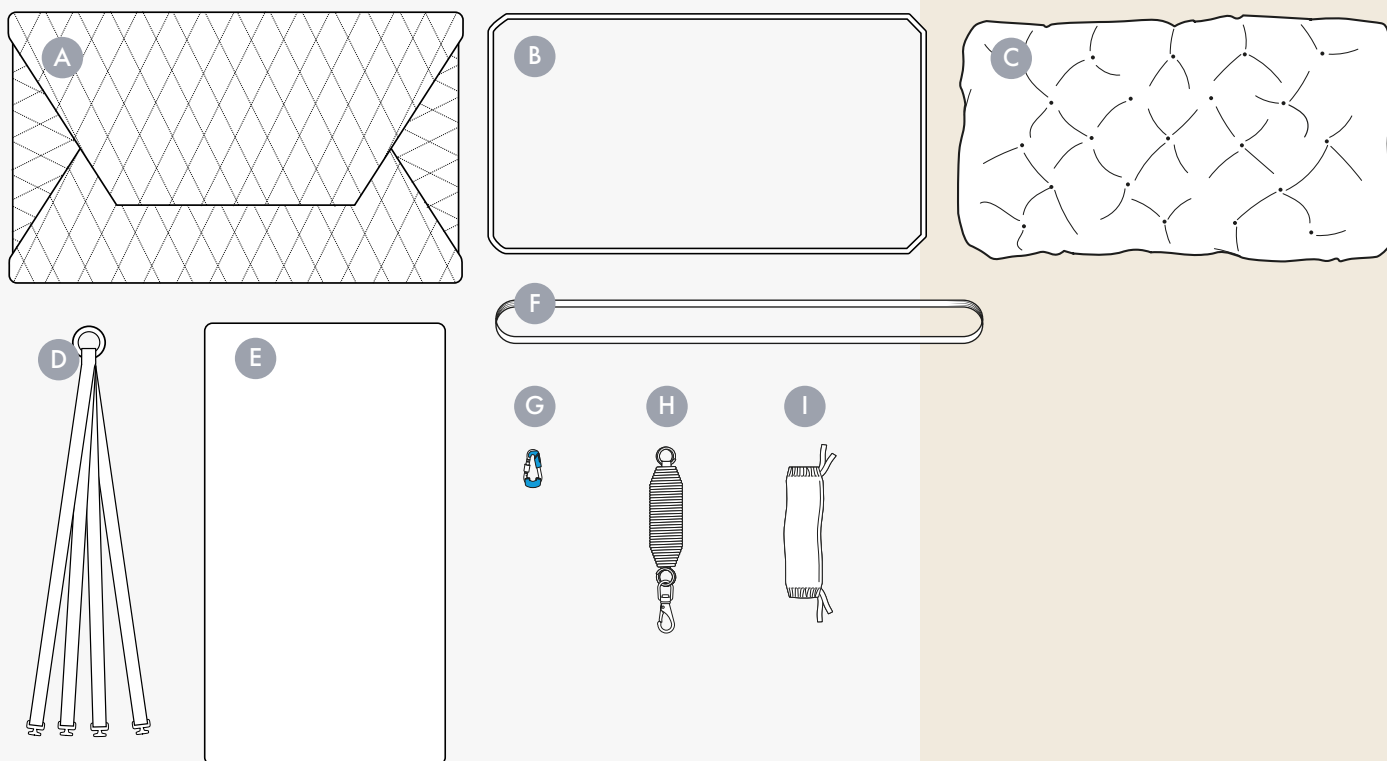


Scan the QR code below with your smartphone or use this link to see the videos:

moonboon.com/pages/videos

What is Included

- A Quilted Cradle Cover
- B Steel Frame
- C Kapok Mattress
- D Set of Adjustable Straps
- E Wooden Baseboard of Masonite with Cover
- F Support Strap for Baseboard
- G Carabiner with attached Plastic Parts
- H Spring for Baby Hammock and Twin Baby Hammock (for children who weigh 3-12kg)
- I Spring Cover



Mounting Options

The Cradle can be installed with the Moonboon Tripod Stand 2.0 or Door Frame Clamp. No matter how you choose to install the Cradle, you should always place it somewhere that does not have a draft and at a safe distance from the nearest wall, furniture, or the like. See further instructions in the section about **HEIGHT**.

Tripod Stand

You should only use the Moonboon Tripod Stand 2.0, developed to carry the Cradle. Place the Tripod Stand on a solid floor that is not crooked.

Read your User Manual for the Tripod Stand carefully.

Door Frame Clamp

It is possible to install the Cradle with a Door Frame Clamp to hang it in a doorway. We recommend you use Moonboon's Door Frame Clamp, which can hold a load of 20kg.

- The door frame on which you mount the Door Frame Clamp should only be 25cm wide as a maximum.
- The door frame clamp must be firmly attached to both sides of the wall.
- No wires must obstruct the door frame.

Read your User Manual for the Door Frame Clamp carefully.

Mounting Kit

If you choose to install the Cradle from a hook in the ceiling, we always recommend you use Moonboon's Mounting Kit, which includes a stainless steel ceiling hook and a hardwearing mounting strap in cotton and nylon. If you choose to use another hook, you must always ensure that the hook is strong enough to carry the weight of the Cradle and the child.

When you have found a nice place to install the Cradle, you must check the ceiling material to ensure that you choose the correct raw plug and hook to prevent the mounting from falling.

Ask the staff at your nearest hardware store for help if you have any doubts.

Please note

Place the legs as far apart as possible to achieve maximum balance and give space for the Cradle. Do not place the legs further apart than 130 cm (3.11 feet).

Please note

Never push the Cradle back and forth or sideways, and do not use it as a swing.

Please note

We recommend you use Moonboon's Mounting Kit, developed explicitly for suspension from the ceiling. If you use other methods to suspend from the ceiling, such as a hook, it must be made from stainless steel without a coating. The same applies if you choose to use a metal chain.

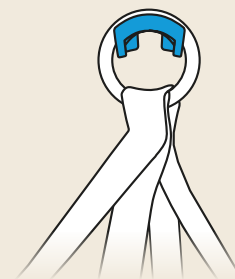
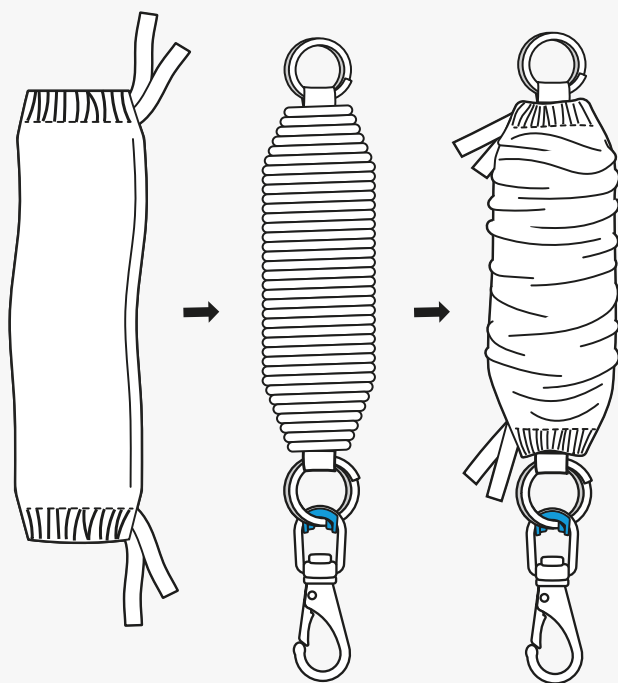
Assembly, Spring

1 First, you must prepare your chosen mounting method; Tripod Stand 2.0, Door Frame Clamp or Mounting Kit. If you have chosen to use the Moonboon Motor, this needs to be installed first; consult the User Manual for the Moonboon Motor on how to do so.

2 Put the cover on the spring. Tie the cover with a bow at the top and bottom and manually stretch the spring to distribute the cover evenly.

Hang the spring using the snap hook provided in the package.

Note that the spring swivel snap hook must point down as shown in the illustration.



Assembly, Cradle

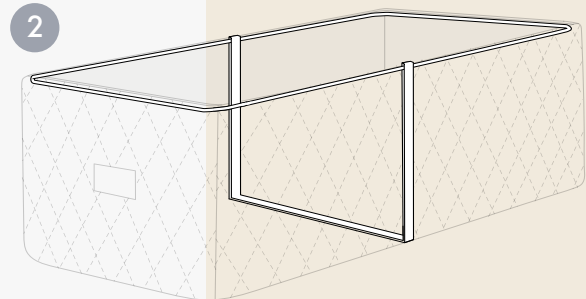
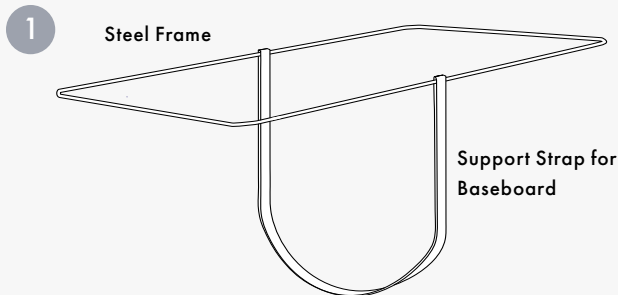
- 1 Before you begin, make sure to check that you have every component.

Find the support strap for the baseboard and the stainless steel frame. Pull the support strap over the narrow joints of the stainless steel frame for the support strap to enclose it. The support strap will be somewhat longer than the frame. Place the strap in the middle of the steel frame. See the illustration for help.

Place the steel frame aside for later.

- 2 Open the cover for the Cradle by unzipping the zipper as wide as possible and open the Velcro patch. Place the steel frame with the attached support strap in the base of the Cradle's cover.

Adjust the support strap to ensure it is placed in the middle of the steel frame. Close the zipper and seal the Velcro opening.

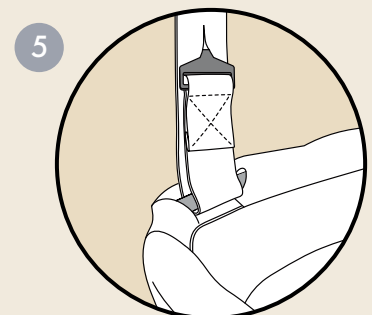
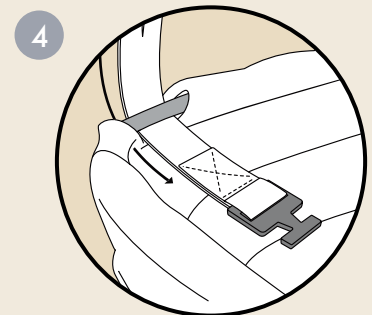


- 3 Place the wooden baseboard at the bottom of the Cradle and make sure it is even. Then place the Cradle's kapok mattress on top of the wooden baseboard.

- 4 Attach the adjustable straps to the steel frame. Pull the straps through the mounting holes in the Cradle's cover. The mounting holes are situated in the corners of the cover. Pass the straps down and around the frame and back up through the mounting holes. Ensure the straps are inserted evenly into the mounting holes and around the frame to achieve a uniform look.

We recommend having the buckle on the outside of the strap; that way, the anchor for the buckle will be on the inside. However, this is a matter of look and taste and is entirely up to you.

- 5 Tighten the straps for the frame by buttoning the buckle's anchor to the strap's bottom buttonhole.



Continued on the next page...

6 Attach the Spring to the Cradle strap's stainless steel metal ring. Attach the Spring to the Motor if you have chosen to use this. Or attach the Spring directly to your chosen mount (Tripod Stand 2.0, Door Frame Clamp, or Mounting Kit for Ceiling Suspension). Make sure that the Moonboon-logo on the outside of the Cradle cover faces forward. Adjust the cradle straps to be centred in their holes.

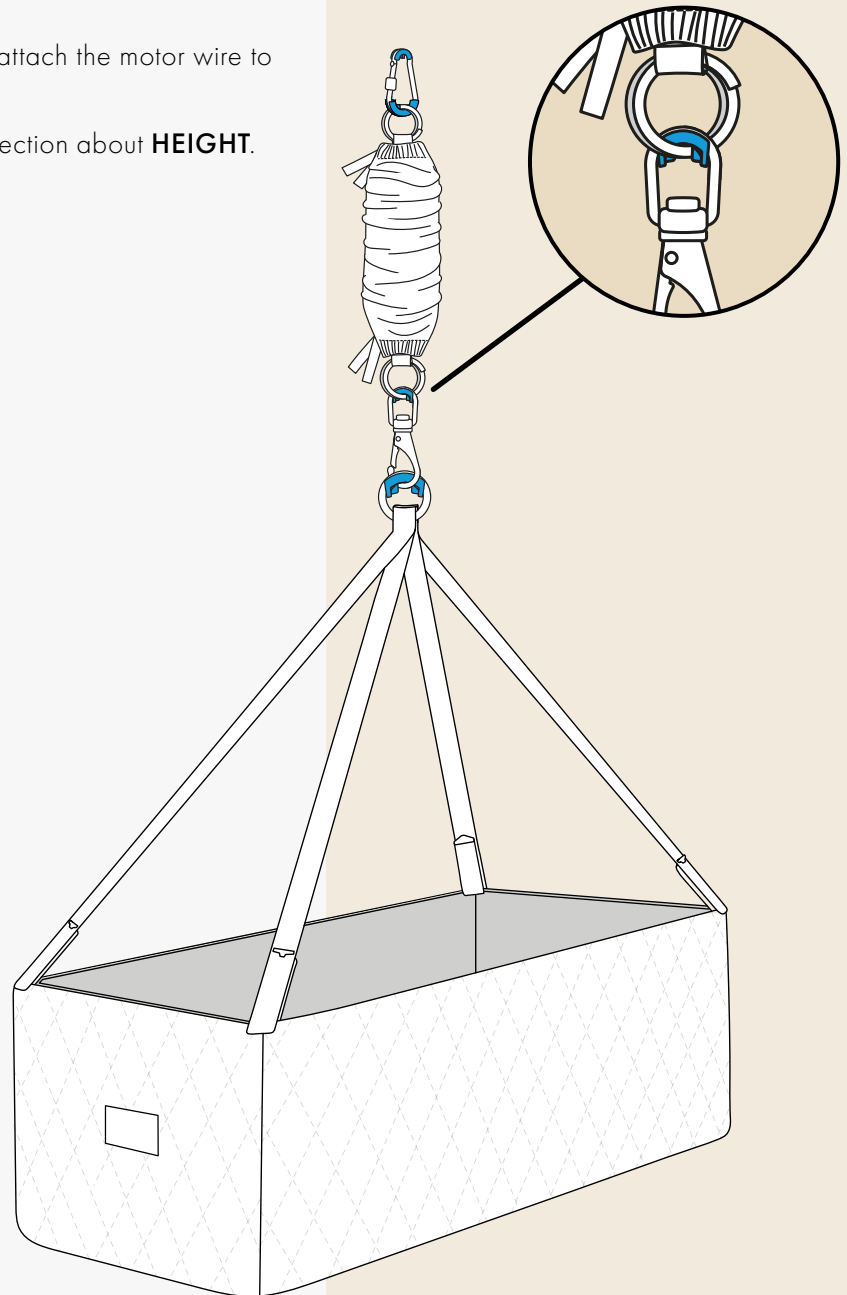
7 Adjust the cradle height by adjusting the cradle straps' length. We recommend always using the bottom holes. The upper holes allow for adjustment of the Cradle to always make it horizontal. You will need to try a few times to find the setting best suited for you.

ATTENTION: When you use the Motor, you must attach the motor wire to a cradle strap of your choosing.

The Cradle is now ready for use. Please read the section about **HEIGHT**.

Please note

Your spring comes with a plastic part already mounted it. Adjust the position of the plastic part so it rests between the metal of the spring and the swivel snap.



Height

The Cradle must not touch the floor when it bounces. Before using the Cradle, make sure to perform tests to ensure this.

Test 1 – Without a child in the Cradle

Attach the Cradle as instructed and pull the Spring to stretch it as wide as possible. Pull on the Spring until you can feel the safety strap (the nylon strap inside the Spring) stop any further extension.

When the spring is fully extended, space must remain between the bottom of the Cradle and the floor.

Test 2 – With a child in the Cradle

Place the child in the Cradle and perform the same test as before. You pull on the Spring until you feel the safety strap holding it back from any further extension.

Here, too, space must remain between the bottom of the Cradle and the floor.

Please note

Follow this instruction and test it regularly as your child grows and gains weight. This way, you ensure that the Cradle never touches the floor.

Placement of Your Child

Place your child in the middle of the Cradle.

Your child should be placed with its feet facing the Moonboon-logo.

If you feel like the Cradle is uneven, with either end tipping slightly, you need to adjust the cradle straps by choosing another buttonhole.

If you use the Cradle once your child has learned to roll over by itself, your child needs to be under constant supervision to avoid any risks of falling out of the Cradle.

Questions and Answers

Why Should I Use a Cradle?

Some infants sleep very well, while others have periods where they find it difficult to rest or sleep. For periods like these, the Cradle can be of great use to you. The bouncing of the Cradle reminds the child of the time in the womb, and it is an extra form of comfort. It helps the little ones sleep better.

How Much and How Long May a Baby Sleep in the Cradle?

Initially, your baby may sleep as much as necessary in the Cradle. However, no two children are alike. If you have doubts about using the Cradle too much, we recommend you consult your health professional for further guidance about your child's sleeping habits.

Why Does the Cradle Come with Plastic Parts?

In August 2021, the Danish Board of Health presented cases of children suffering from small metal particles in their eyes because of unfit metal hooks used for mounting sensory swings, cradles, and other similar products.

With this in mind, Moonboon has developed a specific Mounting Kit to mount your Cradle from concrete and wooden ceilings. Furthermore, Moonboon has developed plastic parts for the Spring and Motor to avoid metal on metal.

Other questions?

Moonboon has provided answers to these and many other questions online. Click on the link below or scan the QR code to see the list.



moonboon.com/pages/FAQ

Cleaning Instructions

Cover for the Cradle

Remove the adjustable straps, the steel frame, the wooden baseboard, and the kapok mattress from the cradle cover before washing it. Wash the cover at 40 degrees in the washing machine.

When you wash it, the cover may shrink a little. Make sure to stretch it back to its original shape and size while it is still wet. Iron the cover while it is still damp to eliminate wrinkles.

Avoid chemical cleaning. Do not use bleach. Only dry on a rack and not in the tumble dryer.

Stainless Steel Frame

The removable stainless steel frame should only be wiped with a damp cloth.

Adjustable Cradle Straps

The Adjustment straps and stainless steel ring must be washed by hand as the metal parts are not made for the washing machine. We advise you not to use the washing machine as the metal ring, and the steel-less buckles may damage your machine.

Kapok Mattress

Do not wash the kapok mattress. Kapok fibres will benefit from being aired outside approximately once a month, during which their natural qualities will be restored. If your child sweats easily, we recommend you air the mattress more frequently. Make sure to keep the mattress dry.

Cover for the Baseboard

Remove the cover from the baseboard to wash it. Wash the cover at 40 degrees in the washing machine.

When you wash it, the cover may shrink a little. Make sure to stretch it back to its original shape and size while it is still wet. Iron the cover while it is still damp to eliminate any wrinkles.

Avoid chemical cleaning. Do not use bleach. Only dry on a rack and not in the tumble dryer.

Please note

During hot summer periods and in warm climates, it is important to remove the kapok mattress from the cradle after every use and thoroughly drying it, before placing it back inside.

Safety Check List

Carefully read the safety checklist below. Once you have gone through the list and made sure everything is as described, you may start using the Cradle. Enjoy!

- Double-check every assembled part carefully and pay special attention to loose components that may be caught on body parts or clothing, which can create choking hazards (this includes strings, buttons etc.)
- Toddlers should not be allowed to play next to this product unsupervised.
- Moonboon only recommends that you use original Moonboon accessories for the Moonboon Cradle.
- Pay attention to fire hazards that may arise from smoking cigarettes, open fires, or other sources of particular warm temperature (this includes electric, infrared and gas warming units) around the product.
- DO NOT USE this product if any parts are missing or if the product has been damaged in any way. Always contact Moonboon for new and original components. NEVER REPLACE original parts with third-party components.
- Only install and assemble the Cradle using its original mounting parts. Always avoid any alternative parts for mounting.
- Check that the safety snap hook is locked and adequately fastened every time you use the Cradle.
- Always use the accompanying plastic parts.
- Make sure the safety straps are secured correctly to the Spring. The strap goes through the Spring and needs to be attached to the “eyes” on each end.
- Make sure the combined 4 buckles with anchors are correctly pulled through the selected buttonholes, and the Cradle has been properly mounted every time you use the Cradle.
- We always recommend that you stay close to the Cradle when your child rests in it. You must ensure the Cradle does not touch the floor when it bounces. Read the section about **HEIGHT**.
- Moonboon discourages using the Cradle as soon as the child can turn over or sit on their own. If you continue using the Cradle after this point, your children need constant supervision when in the Cradle. Moonboon disclaims any responsibility for using the Cradle in these circumstances.
- Never use the Cradle as a toy, swing or the like. The Cradle must not be used as such when your child rests in it. Make sure everyone around you – particularly children – is aware of this when your child is in the Cradle.
- If there are any visible wear and tears to the fabric or metal parts, you should avoid using the Cradle before this is rectified.
- Do not swaddle or wrap a blanket around your baby while the baby is placed in the Cradle.

Please note

Check these things regularly to ensure your Cradle and the chosen mounting live up to these points.